

MtBE Remediation Bureau

Drinking Water Quality Program



Business & Industry Association of NH

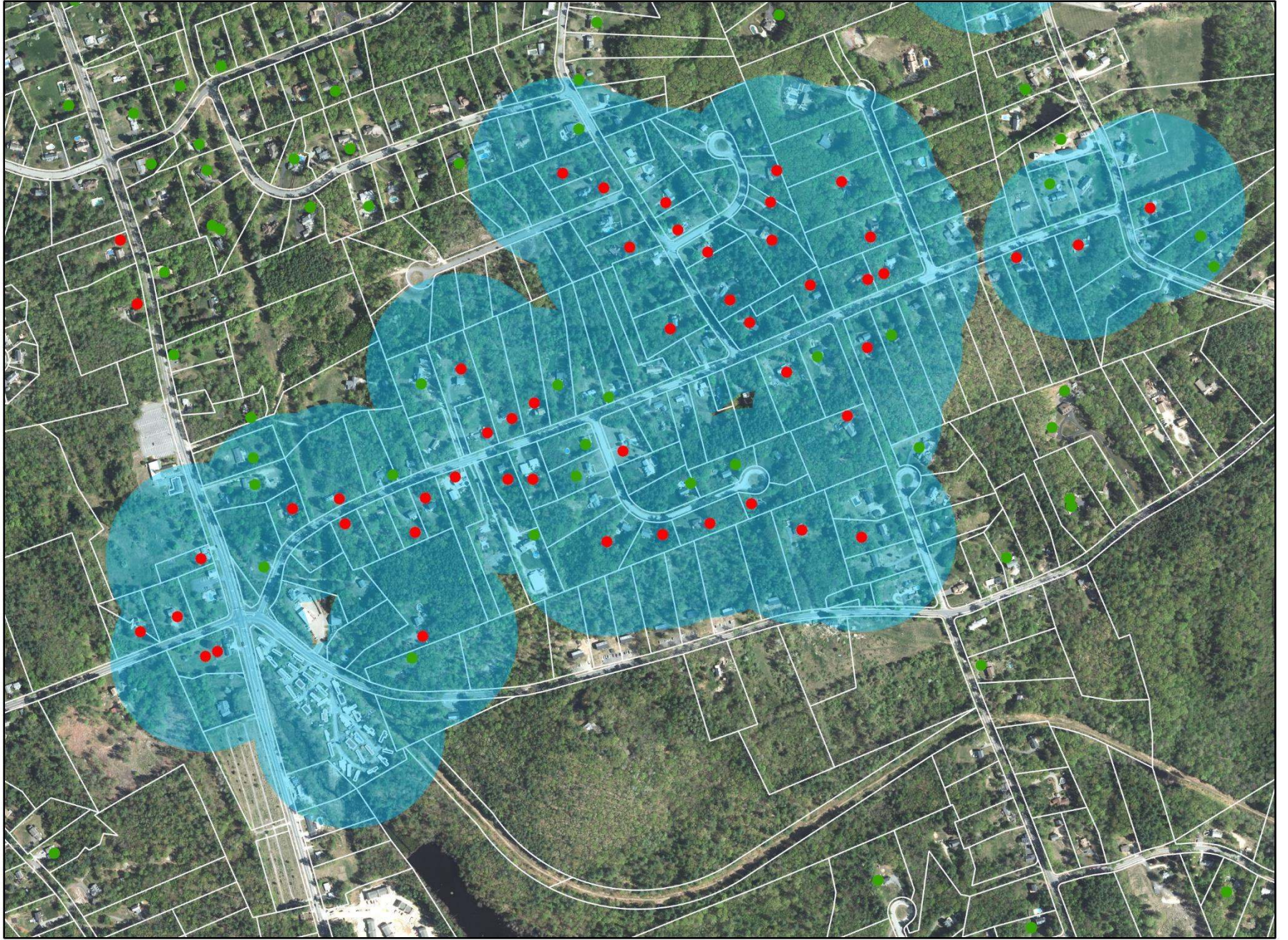
September 12, 2023

Background

- MtBE Drinking Water Quality Program
 - MtBE Settlement Funds for VOC Samples
 - ECF / ARPA Funds for PFAS Samples
 - DWGTF for Other Samples
- Sampling for PFAS began in 2016
 - 2016 – 2018: Targeted known sites
 - 2018 – 2019: Targeted potential sites
 - 2019 – 2021: Exploratory work
 - 2021 – 2023: Switch from sites to areas

PFAS Notifications

- 485-C:14-b Notification of Groundwater Contamination Required
 - Upon the discovery of GW contamination
 - DES shall provide notification to:
 - Property owners within 500'
 - Public water suppliers
 - The local health officer
 - Notification shall be made in writing within 45 days of discovery



<https://www.pfas.des.nh.gov/>



How Can We Help You Today?

I am looking for:

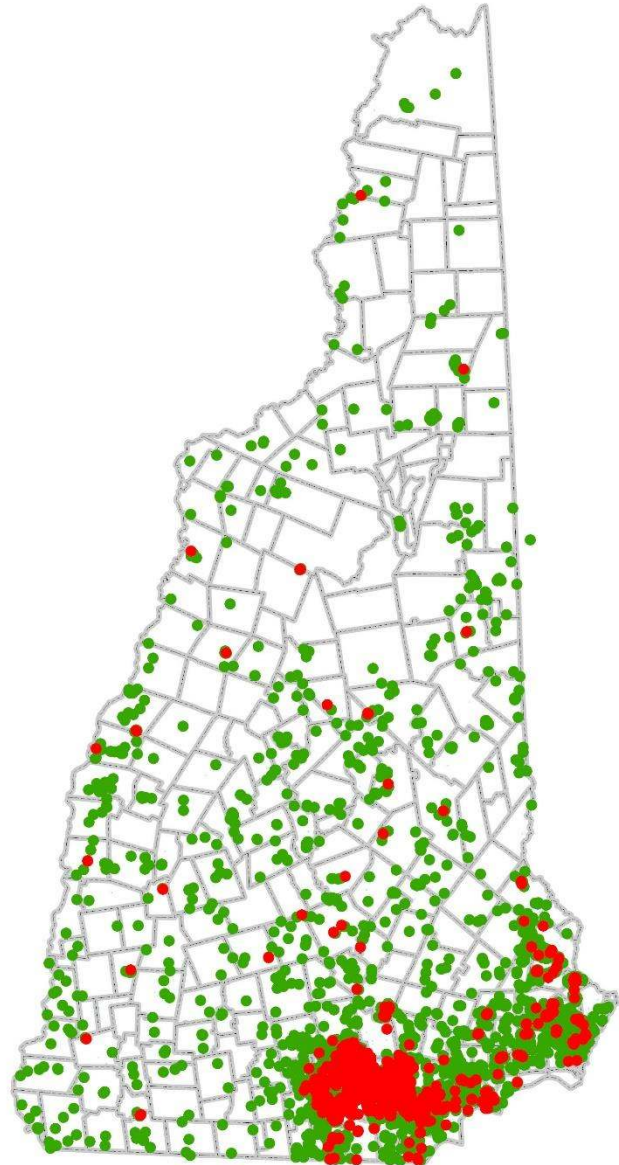
select an option ▼

- select an option
- AFFF Takeback Program
- PFAS Removal Rebate Program for Private Wells
- Private Well Testing Request Form
- Saint-Gobain Site Investigation
- Sampling Map

PFAS Response Website

N= 14,701

- 4,546 samples exceeded one or more NH MCLs
 - 4,328 PFOA > 12 ppt
 - 551 PFOS > 15 ppt
 - 296 PFHXS > 18 ppt
 - 42 PFNA > 11 ppt
- 11,281 had detections

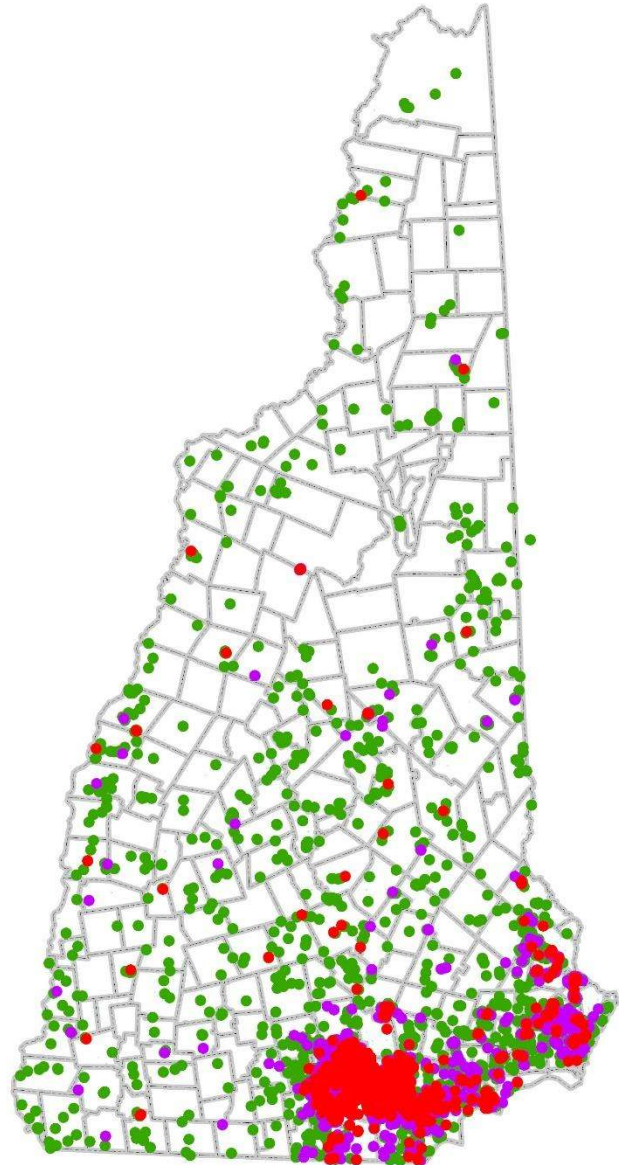


N = 14,701

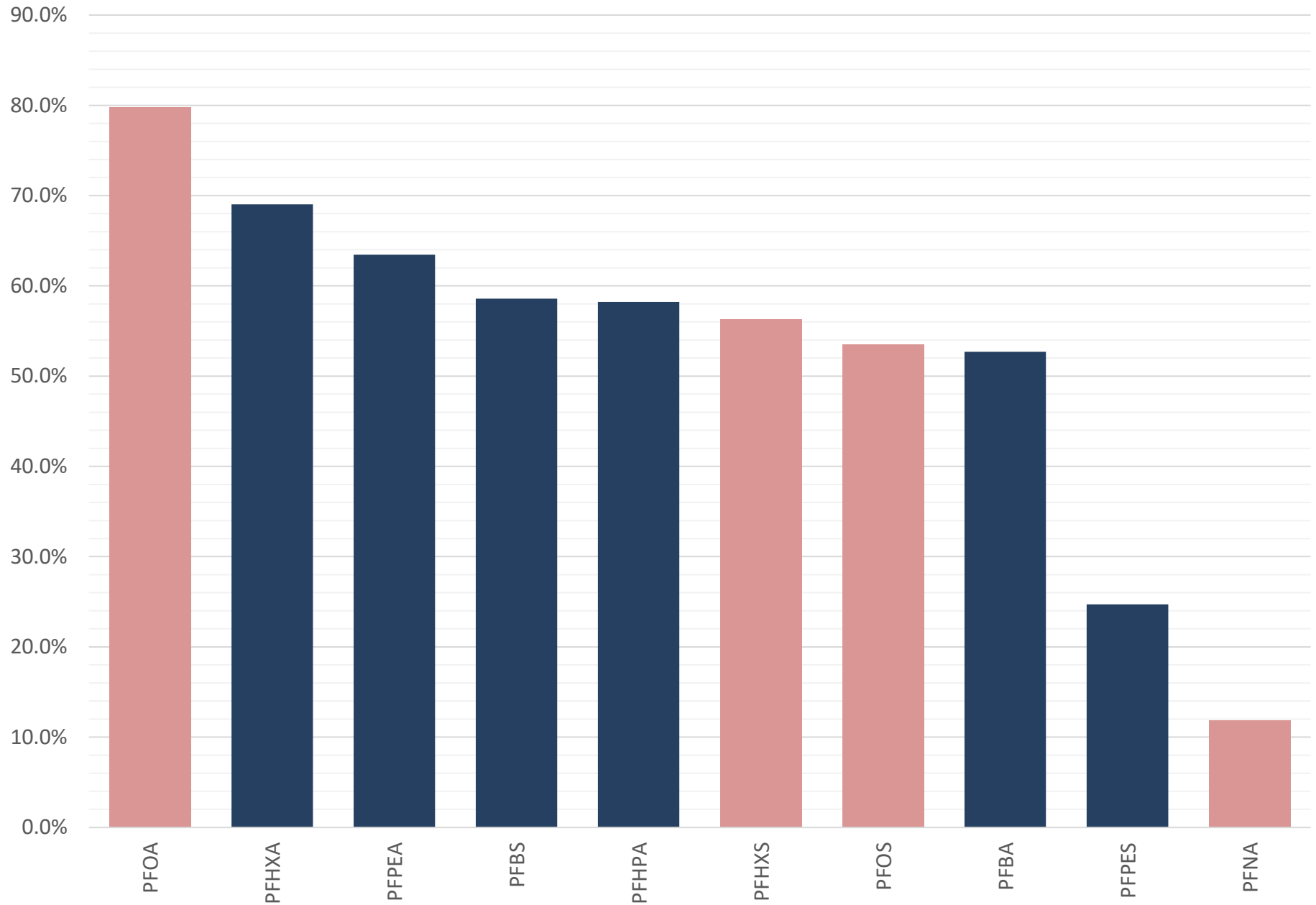
- 8,743 exceed at least one EPA PROPOSED standard
 - 8,530 PFOA > 4 ppt
 - 2,591 PFOS > 4 ppt
 - 595 > HI 1.0

Hazard Index =

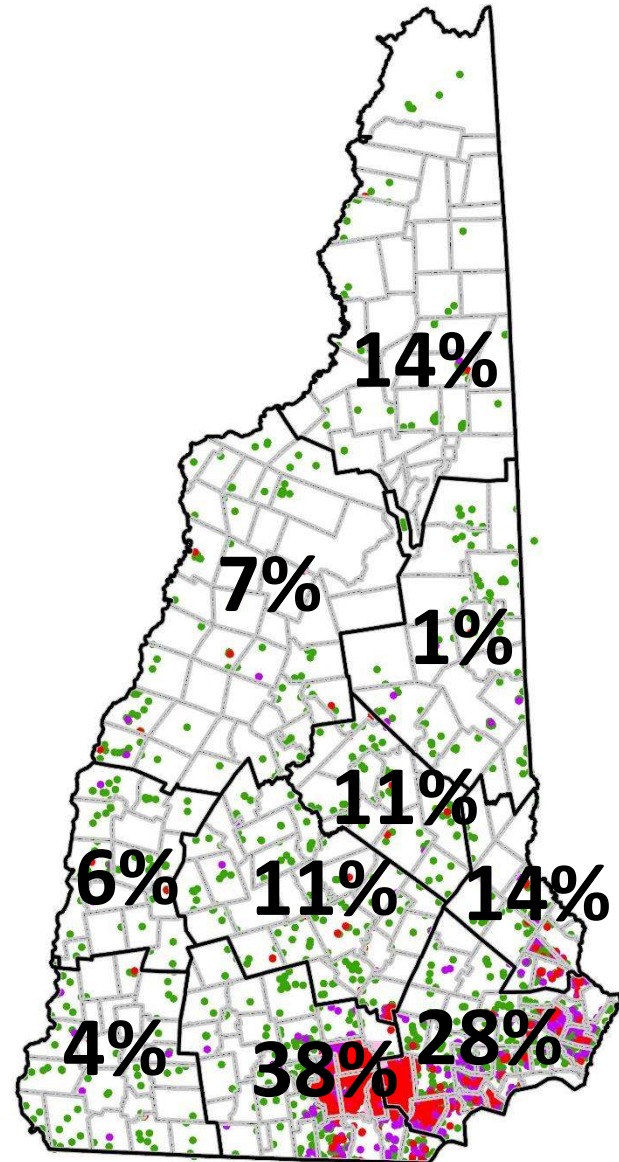
$$\frac{\text{GENX}}{10} + \frac{\text{PFBS}}{2000} + \frac{\text{PFNA}}{10} + \frac{\text{PFHXS}}{9}$$



PFAS RATE OF DETECTION BY COMPOUND



COUNTY	SAMPLES	>AGQS	PERCENT
BELKNAP	114	12	11%
CARROLL	117	1	1%
CHESHIRE	118	5	4%
COOS	80	11	14%
GRAFTON	165	12	7%
HILLSBOROUGH	7227	2723	38%
MERRIMACK	429	47	11%
ROCKINGHAM	6015	1680	28%
STRAFFORD	353	50	14%
SULLIVAN	82	5	6%
TOTAL	14701	4546	31%



Sampling Priorities

- Properties receiving notifications
- Properties not receiving notifications located in communities with a high rate of exceedance
- Screening properties in other communities while en route to sampling a notified property
- Direct mailings to properties in high risk areas that received notifications that have not requested to be sampled

Key Points

- A new PFAS exceedance detected in a well daily
- Rate of PFAS **exceedances** are higher than **detection** rates of other anthropogenic contaminants
- Wells that are non detect for the four regulated compounds are not common
- PFAS impacts are widely dispersed with elevated levels in areas with no discernible responsible party
- Many potentially impacted wells have not been sampled in highly impacted communities
- Very limited time series data

Contact Information

Derek Bennett

Drinking Water Quality Program

MtBE Remediation Bureau

603-271-8520

derek.s.bennett@des.nh.gov